

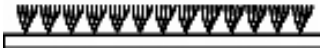
APOLLO AB

PERFORMANCE

FABRICAGEMETHODE

Getuft 1/10" gesneden pool COC

TYPE



POOLSAMENSTELLING

100% PA IMPREL®

TUFTDOEK

Geweven PP

RUG

Synthetische dubbele rug

POOLGEWICHT

ca. 420 gr/m²

TOTAAL GEWICHT

ca. 1600 gr/m²

POOLHOOGTE

ca. 2,1 mm

TOTALE HOOGTE

ca. 4,2 mm

AANTAL NOPPEN

ca. 216.000/m²

PERMANENT ANTISTATISCH

<2 kV

GELUIDSISOLATIE

22 dB

WARMTEDOORLAATBAARHEID

0,09 m² K/W

LICHTECHTHEID

5-6

WATERECHTHEID

4-5

BRANDKLASSE

Brandklassement CfI-s1
alleen bij volledige verkleving

MÉTHODE DE FABRICATION

Tuftéé 1/10" velours coupé COC

ASPECT



COMPOSITION DU VELOURS

100% PA IMPREL®

SUPPORT

Tissé PP

DOSSIER

Double dossier synthétique

POIDS DU VELOURS

ca. 420 gr/m²

POIDS TOTAL

ca. 1600 gr/m²

HAUTEUR DU POIL

ca. 2,1 mm

HAUTEUR TOTALE

ca. 4,2 mm

NOMBRE DE POINTS

ca. 216.000/m²

ANTISTATIQUE PERMANENT

<2 kV

ISOLATION AUX BRUITS D'IMPACT

22 dB

RÉSISTANCE THERMIQUE

0,09 m² K/W

RÉSISTANCE À LA LUMIÈRE

5-6

RÉSISTANCE À L'EAU

4-5

CLASSEMENT FEU

Classement feu CfI-s1
uniquement en pose collée

HERSTELLINGSVERFAHREN

Getuftet 1/10" Schnittpol COC

BILD



POLMATERIAL

100% PA IMPREL®

TRÄGERMATERIAL

Bändchengewebe PP

RÜCKENAUSRÜSTUNG

Synthetischer Zweitrücken

POLGEWICHT

ca. 420 gr/Qm

GESAMTGEWICHT

ca. 1600 gr/Qm

POLHÖHE

ca. 2,1 mm

GESAMTHÖHE

ca. 4,2 mm

NOPPENZAHL

ca. 216.000/Qm

PERMANENT ANTISTATISCH

<2 kV

TRITTSCHALLDÄMMUNG

22 dB

WÄRMEDURCHLASSWIDERSTAND

0,09 Qm K/W

LICHTECHTHEIT

5-6

WASSERECHTHEIT

4-5

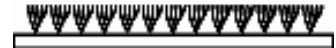
BRANDVERHALTENSKLASSE

Baustoffkl. CfI-s1
nur wenn vollflächig verklebt

MANUFACTURING PROCESS

Tufting 1/10" cutpile COC

ASPECT



PILE CONTENT

100% PA IMPREL®

PRIMARY BACKING

Woven PP

SECONDARY BACKING

Synthetic backing

PILE WEIGHT

ca. 420 gr/m²

TOTAL WEIGHT

ca. 1600 gr/m²

PILE HEIGHT

ca. 2,1 mm

TOTAL HEIGHT

ca. 4,2 mm

NUMBER OF KNOTS

ca. 216.000/m²

PERMANENTLY ANTISTATIC

<2 kV

SOUND INSULATION

22 dB

THERMAL RESISTANCE

0,09 m² K/W

LIGHT FASTNESS

5-6

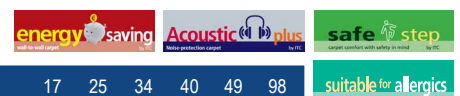
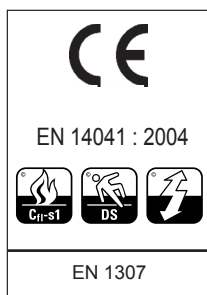
WATER RESISTANCE

4-5

FIRE CLASS

Fireristance CfI-s1
only with full adhesion

Onder voorbehoud van wijzigingen der technische specificaties - Sous réserve de modifications techniques - Unter Vorbehalt von Änderungen der technischen Daten - All rights reserved to alter technical specifications.

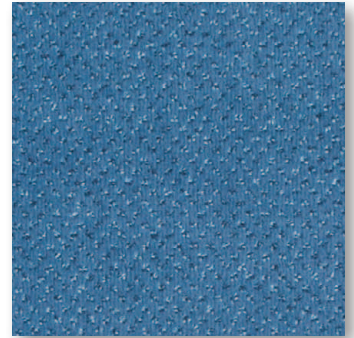


Apollo	17	25	34	40	49	98
AB ca 4 m	○	○	○	○	○	○
AB ca 5 m	○	○	○	○	○	○
Apollo	150	180	320	920	940	
AB ca 4 m	○	○	○	○	○	
AB ca 5 m	○	○	○	○	○	

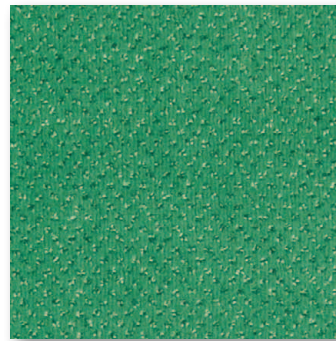


APOLLO AB

PERFORMANCE



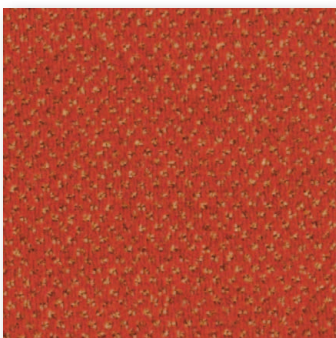
▲ 320 (400+500 cm)



▲ 25 (400+500 cm)



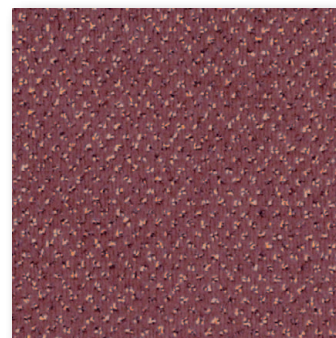
▲ 920 (400+500 cm)



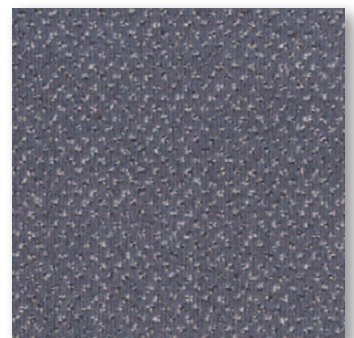
▲ 150 (400+500 cm)



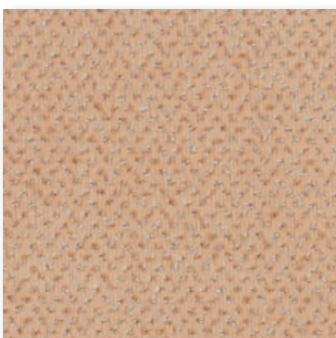
▲ 180 (400+500 cm)



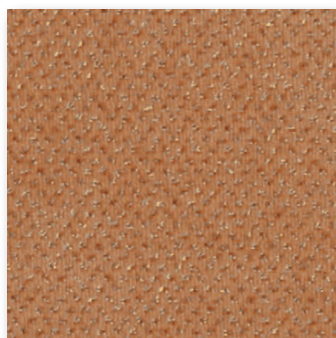
▲ 17 (400+500 cm)



▲ 940 (400+500 cm)



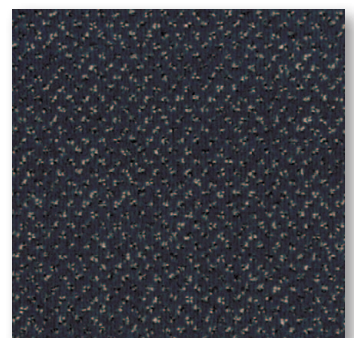
▲ 34 (400+500 cm)



▲ 40 (400+500 cm)



▲ 49 (400+500 cm)



▲ 98 (400+500 cm)