

Lily

1/10" uni saxony

**100% solution dyed
PA IMPREL® FINESSE**

RUG
Twinback

POOLHOOGTE
± 5,5 mm

TOTALE HOOGTE
± 8,5 mm

POOLGEWICHT
± 935 g/m²

TOTAAL GEWICHT
± 1.900 g/m²

AANTAL NOPPEN/M²
± 201 500

LICHTECHTHEID
≥ 7

WATERECHTHEID
≥ 4-5

WARMTEDOORLAATWEERST.
± 0,147 m² K/W

BRANDKLASSE
Cfl-s1 (EN 13501-1)

1/10" saxony uni

**100% solution dyed
PA IMPREL® FINESSE**

DOSSIER
Twinback

HAUTEUR DU VELOURS
± 5,5 mm

HAUTEUR TOTALE
± 8,5 mm

POIDS DU VELOURS
± 935 g/m²

POIDS TOTAL
± 1.900 g/m²

NOMBRE DE POINTS/M²
± 201 500

RÉSISTANCE À LA LUMIÈRE
≥ 7

RÉSISTANCE À L'EAU
≥ 4-5

RÉSISTANCE THERMIQUE
± 0,147 m² K/W

CLASSEMENT FEU
Cfl-s1 (EN 13501-1)

1/10" Uni-Saxony

**100% solution dyed
PA IMPREL® FINESSE**

RÜCKEN
Twinback

POLHÖHE
± 5,5 mm

GESAMTHÖHE
± 8,5 mm

POLGEWICHT
± 935 g/m²

GESAMTGEWICHT
± 1.900 g/m²

NOPPEN/M²
± 201 500

LICHTECHTHEIT
≥ 7

WASSERECHTHEIT
≥ 4-5

WÄRMEDURCHLASSWIDERST.
± 0,147 m² K/W

BRANDKLASSE
Cfl-s1 (EN 13501-1)

1/10" plain saxony

**100% solution dyed
PA IMPREL® FINESSE**

BACKING
Twinback

PILE HEIGHT
± 5,5 mm

TOTAL HEIGHT
± 8,5 mm

PILE WEIGHT
± 935 g/m²

TOTAL WEIGHT
± 1.900 g/m²

TUFT DENSITY/M²
± 201 500

LIGHT FASTNESS
≥ 7

WATER RESISTANCE
≥ 4-5

THERMAL RESISTANCE
± 0,147 m² K/W

FIRE CLASS
Cfl-s1 (EN 13501-1)

EN14041
CE
19
Balta Industries - Kanegem-
straat 15 - BE 8700 Tielt
DOP: 1011#IE00CV
Textile Floor Covering EN 1307
Notified body 2401
www.baltamediaibank.com

REG. NR
CAA853D3
www.pro-dis.info

EMISSIONS DANS L'AIR INTÉRIEUR
A+
A+ A B C

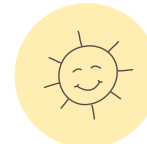
EAC



10 YEARS
STAIN-FREE



20 YEARS
WEAR WARRANTY



INFINITE
LIGHT FASTNESS



EVERLASTING
SOFTNESS



ETERNAL BLEACH
CLEANABILITY



27	30	33	35	37	43	47	63	74	77	86	90	93	95	96	97	98
ca 4m

Lily



63



37



33



43



47



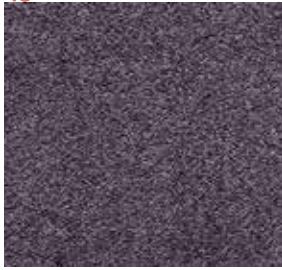
93



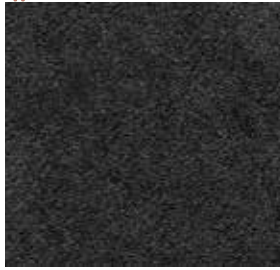
90



30



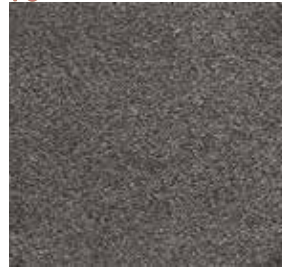
86



98



97



96



35



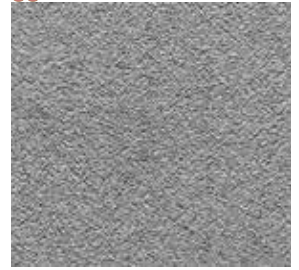
77



74



27



95